

Would you like to see your artwork or story on your department at Waterfall House?

Then have a look at our **'Doodle Story'** competition!
see www.lucentia-design.com/waterfall-house
or scan the QR code for full details



Doodle your story during your visit and hand in to a member of staff,
or use the dropbox found on the second floor reception desk.

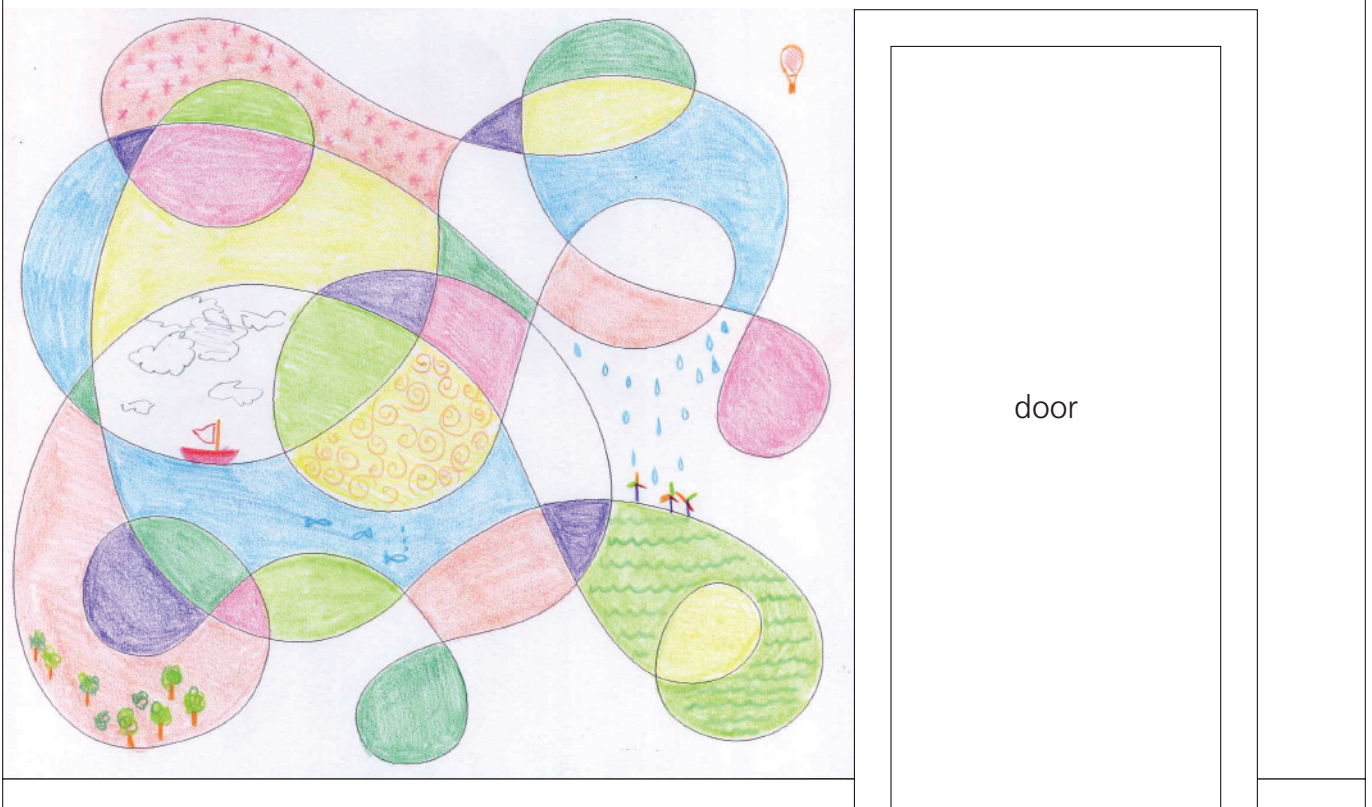
You can use the doodle template overleaf or make you own!

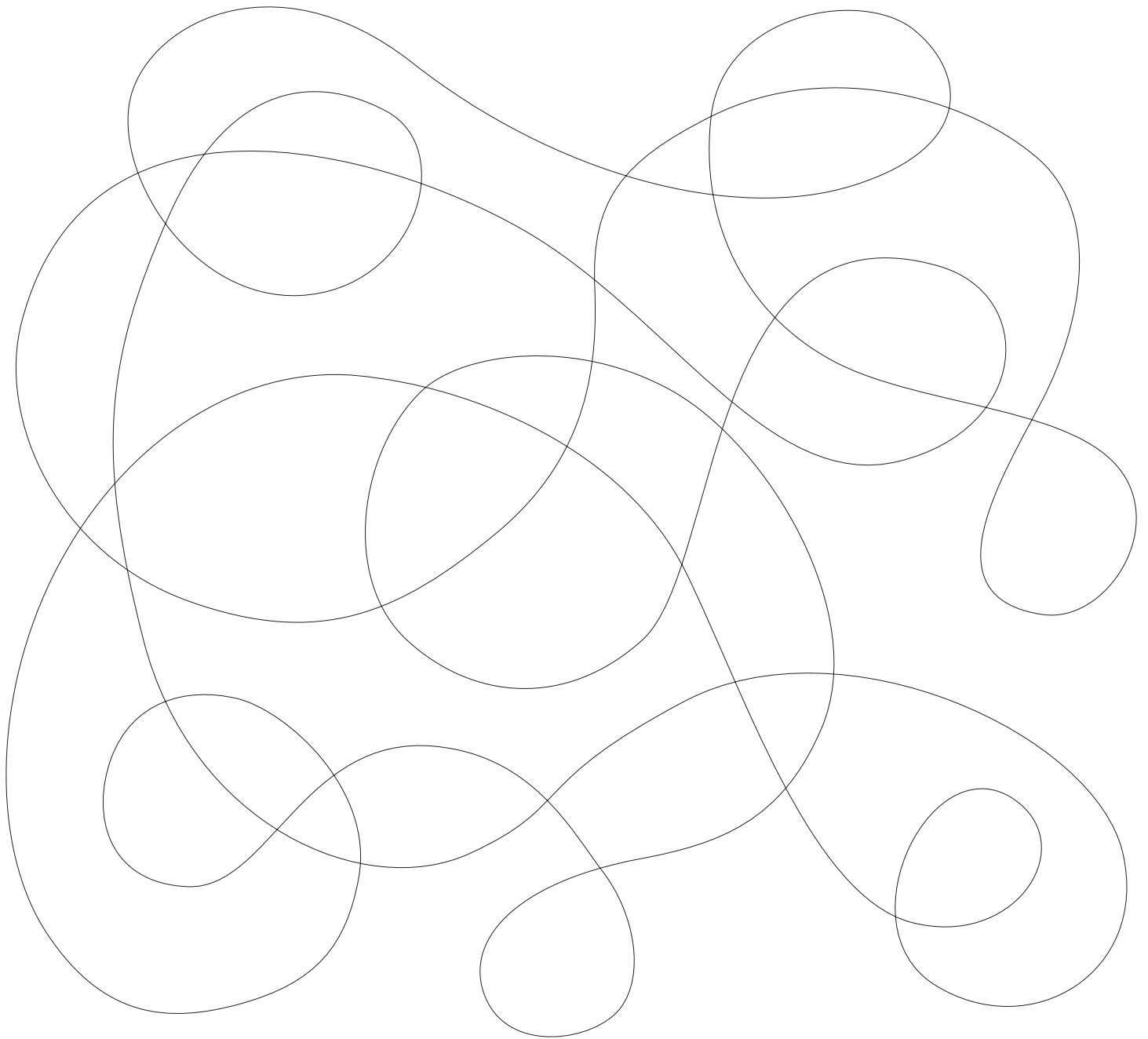
Magical Journey

Your design can be as simple or as complex as you like,
and your story can be as short or as descriptive as you wish!

The design below is an illustrative prompt to help you get started,
we are dreaming of fun outdoor adventures.

showing potential size of artwork on the wall





Your doodle can be any shape - just colour and draw within the shapes or along the lines.
Remember to write your story down to go with your doodle, this can be on the doodle or separately.

You can hand your finished piece to a member of staff on your department OR
use the dropbox found on the second floor reception desk OR
Take a photo and send your image to enquiries@lucentia-design.com

If you would like us to stay in touch with you regarding how we've used your ideas, and so we can credit you,
please do give the following info:

name:

age:

clinic: